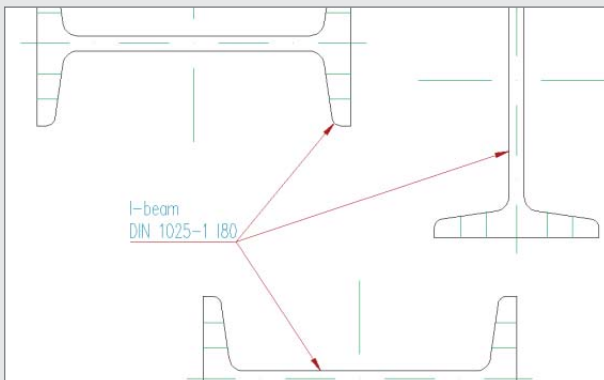


ATHENA₂₀₁₄

Drawing, planning, designing – be even more productive with the new upgrade!

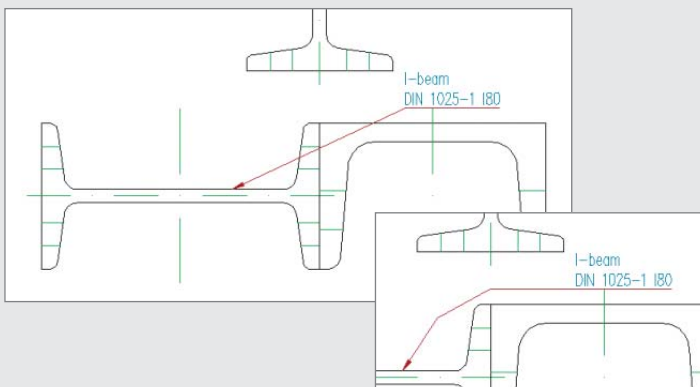
Really fast! Really good!

With the development of the ATHENA 2014 Upgrade the emphasis this time is on increasing productivity. New and revised functions ensure more convenient and faster drawing, a more comprehensive overview for extensive drawings and increased precision and reliability with tricky designs. ATHENA 2014 can provide a higher compatibility level due to the new BIM interface and the NC-X export option.



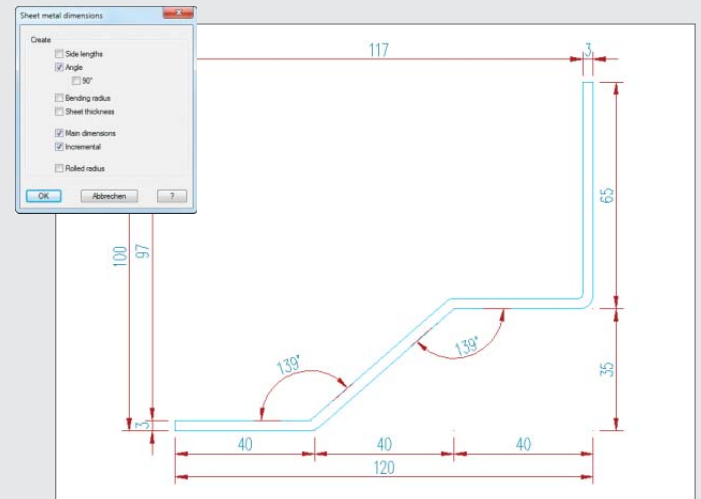
Adding and removing leader lines

For labeling several identical parts further leader lines can be added to an existing leader simply by defining additional points. Also, existing leader lines can be removed using this command.



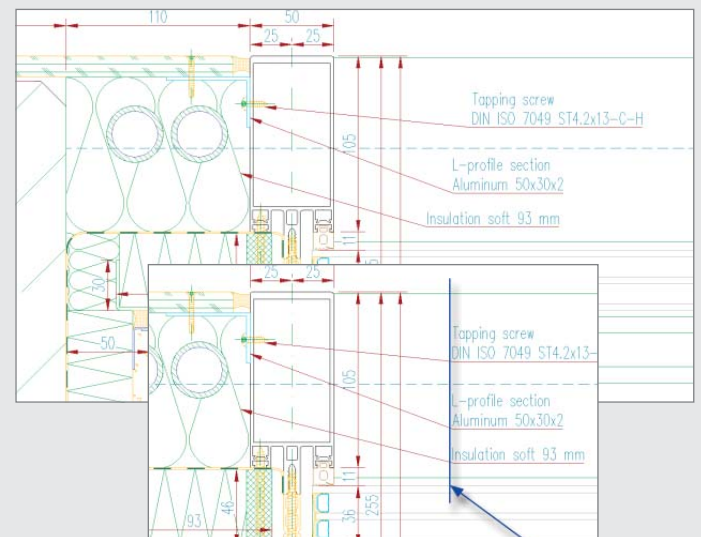
Adding and removing segments of leader lines

With this new command leader line segments of a leader line can be added to divide the line into more segments. They can be moved using grips to shape the leader and also removed to reduce the number of segments.



Sheet metal dimensions

This new sheet-specific dimension function makes the dimensioning of metal sheets in ATHENA even quicker and easier. The sheet metal is dimensioned at the press of a button.

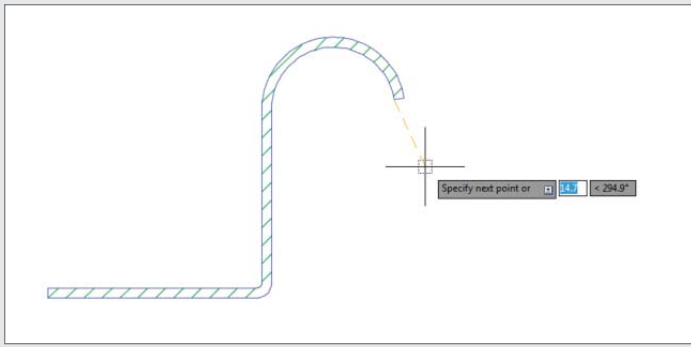


Align leader

In order to be able to tidy up a drawing with just a few clicks, ATHENA leaders and welded-seam and edge symbols can be selected and aligned to one another by defining an alignment point. This convenient function connects seamlessly to the well-known alignment of ATHENA dimensions.

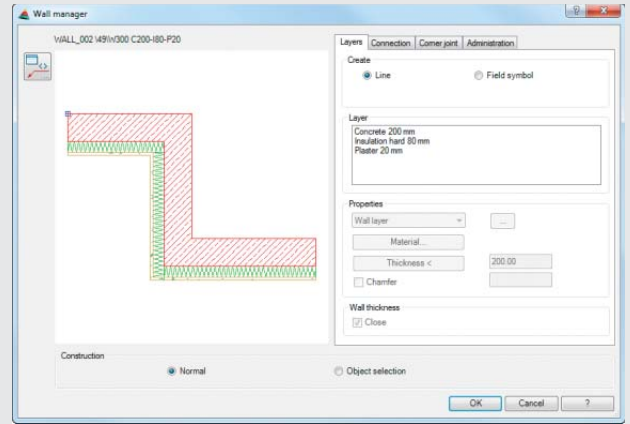
Sections from 2D now associative

Sections through a facade elevation including profiles and infills (Facade elevation+) or a LogiKal element now react associatively to changes. Due to the linking, the section does not need to be edited additionally, but instead is available already updated after a change.



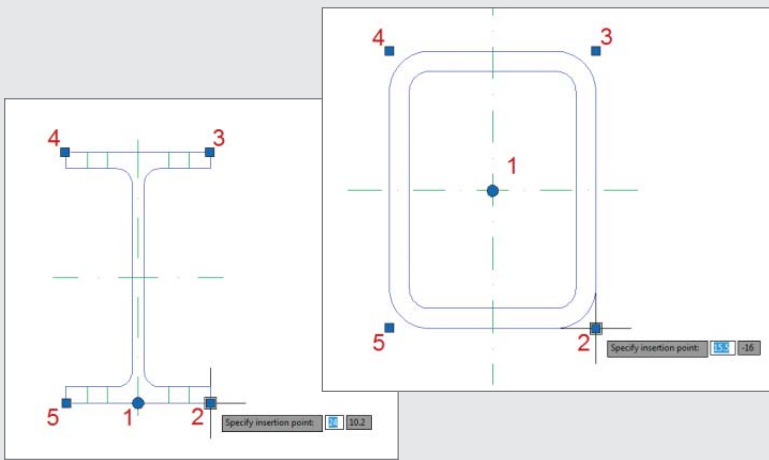
Zooming during drawing

The ATHENA axes, metal sheets and membranes are now produced directly during drawing without temporary display. This means that zooming is now possible when drawing. The drawing process can be terminated at any time and the object drawn so far is retained. These new functional features are also brought to bear when creating ATHENA welded seams, walls, section symbols and projections.



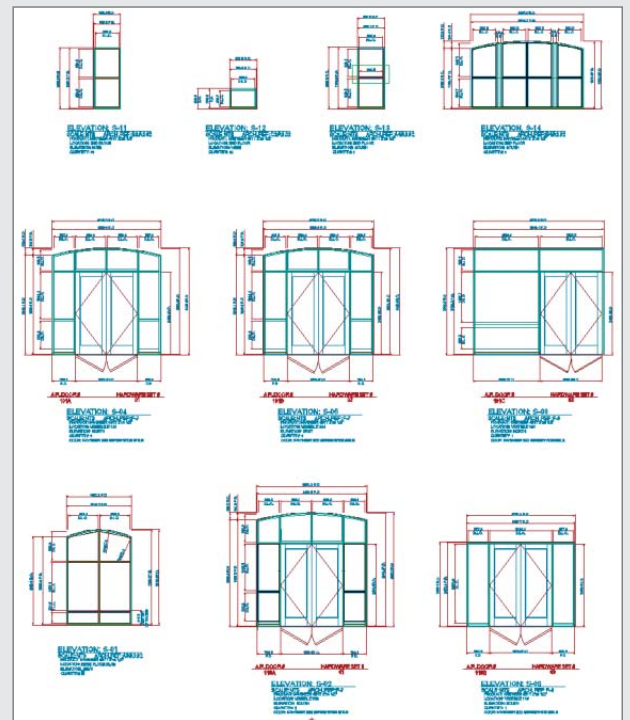
Wall manager

This new command enables ATHENA walls to be combined and managed in libraries. In addition there is a new command, "Use wall", with which the walls can be applied, i.e. generated.



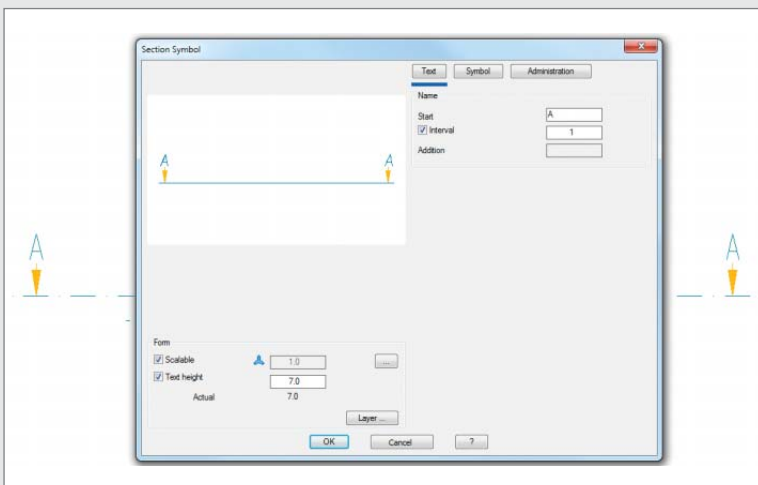
Selectable insertion point for standard parts and semi-finished products

Whereas previously the insertion point of standard parts and semi-finished products was located at the center point of the part, a different insertion point can be selected during insertion using the control keys. This feature enables parts to be positioned more quickly.



List of facade elevations+

This new command produces a parts list of all facade elevations present in a drawing with additional product information. For example, with bars or infills the facade elevations can be saved and inserted.



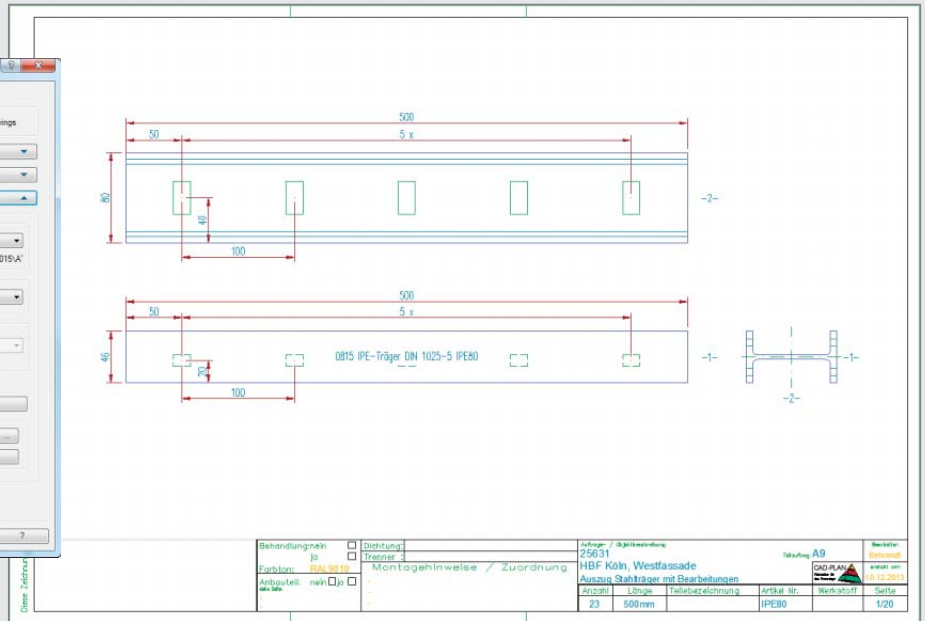
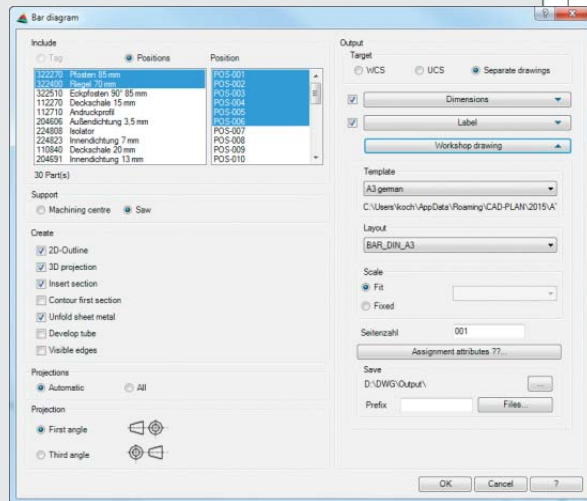
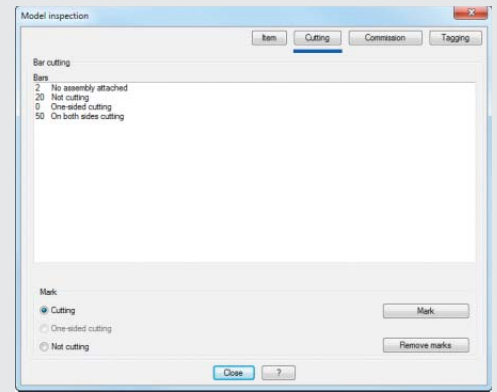
Section symbol

Section symbols can now also be displayed appropriate to standards.

Model Inspection

This new function checks 3D models and displays assignments such as item numbers, cuttings, jobs and tags. This provides a quick overview of the issued assignments.

- Item: for checking whether all assemblies and components have item numbers.
- Cutting: to mark bars according to the assigned cuttings, irrespective of position.
- Job: for the isolated display of objects which belong to a job or job part all other parts are masked out ("Objects invisible"). Here, the display mode does not change.
- Tag: for finding or showing certain positions or identical parts, with multiple selection.



Bar diagram

The command "Bar diagram" has been appropriately expanded in that now multiple identical bars appearing in a drawing can be output all together via selection according to tag or position. Selection is also possible via a job and the associated tags and positions.

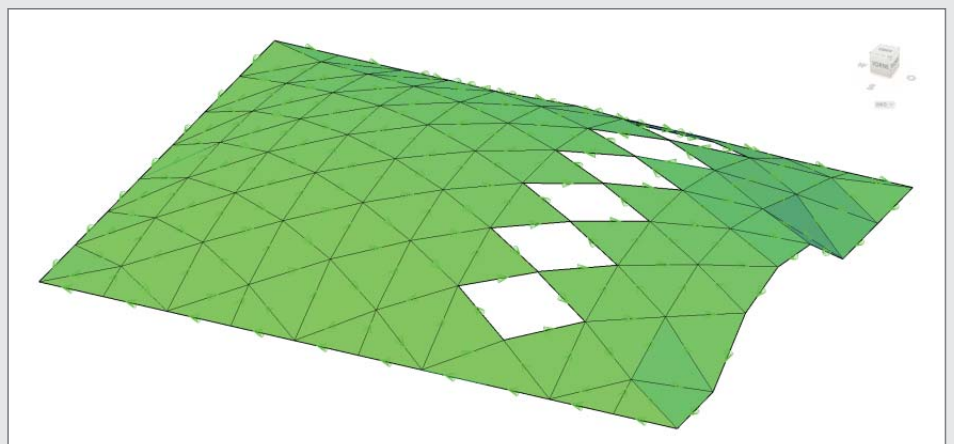
In a 2D diagram produced with this function the processes are now also dimensioned. With recurring processes with the same center distance only one unit spacing is used and the number of processes is also output in a dimension.

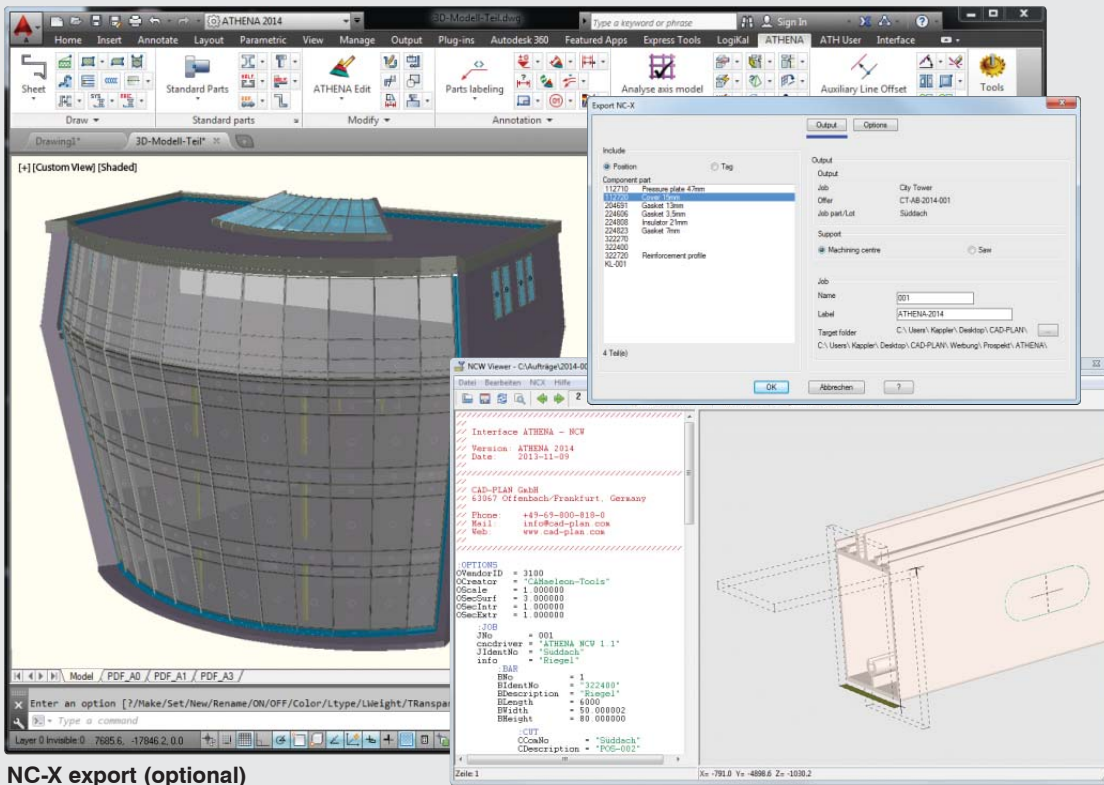
For a bar which is defined as sheet metal the diagram drawing can now contain the development with the processes. With objects which meet the folded sheet at an angle and produce the process, the largest possible extension of the process is shown.

Attributes which are assigned to values for the caption are now saved in the model drawing and do not need to be assigned again when producing the next bar diagram.

Visualize axis model

When designing it often occurs that fields within a 3D model are not level or that not all corners of a field lie in one plane. It is sometimes difficult to localize such irregularities, but the new visualization possibility of an analyzed axis model makes this easy by marking the relevant fields.





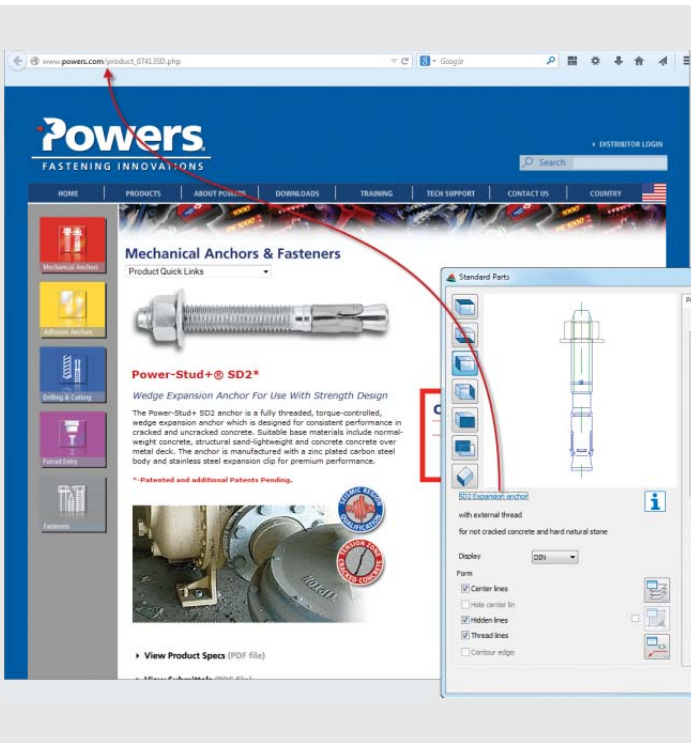
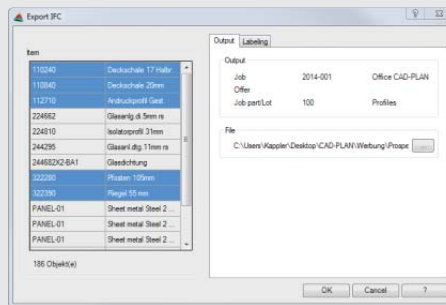
NC-X export (optional)

With this optional function NC data of ATHENA 3D profiles can be generated in the NC-W format. Together with all the geometrical information, such as cut-out parts and processes, the NC data also contains job and job-part information. An optional post-processor is required to be able to control profile processing machines.

BIM interface

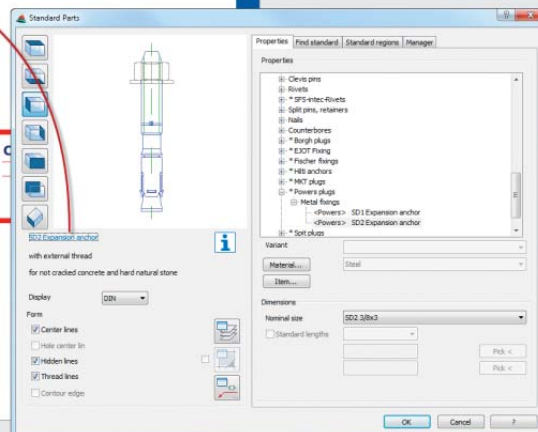
ATHENA includes a BIM (IFC) interface. IFC stands for "Industry Foundation Classes" and in construction it is the standard for the description of digital building models, also known as BIM (Building Information Modeling). Using the interface it is possible to transfer ATHENA 3D facade models to so-called BIM programs, such as for example, Autodesk Revit, and, say, to carry out collision checks with other project subsections. Apart from 3D objects, job-specific data, such as item or position numbers etc., are also transferred.

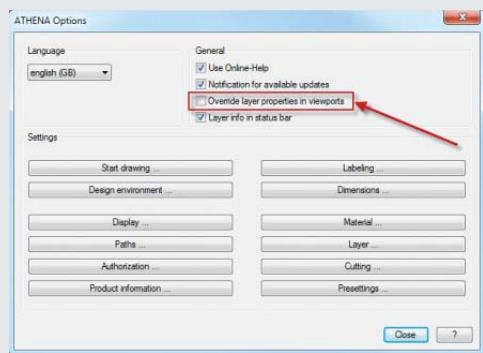
Also, objects can be transferred from Revit to ATHENA and then be allocated profiles, infills, sheet metal, etc. These can then be returned afterwards.



Manufactured parts now with additional information

For almost all manufactured parts additional information provided online by the manufacturer can now be called up directly from the dialog box. The amount of detail in this information depends on that offered by the manufacturer.





Improved performance when switching between layouts

With extensive drawings with several viewports, when changing to the relevant layout tab performance problems can arise due to the AutoCAD functional feature of overwriting layer properties per viewport. Therefore, for ATHENA objects this function can be activated and deactivated using a tick box.

Many new standard and manufactured parts

The existing parts have been revised and supplemented (e.g. Hilti and Würth plugs). In addition we have added new manufactured parts, such as for example Peiner profiles, Borgh anchors, RP-Technik screws, Jordahl screws, new groups of Hilti screws (self-drilling screws, thread-forming screws, sandwich screws). The standard parts have been supplemented with new rolled steel profiles (DIN 1026-2, DIN EN 10056-1, DIN 536-1, 536-2) and new tubular profiles (EN 10296-1).

Object activator (working in pure AutoCAD with ATHENA objects)

The ATHENA Object Activator is now available, along with AutoCAD, also for AutoCAD LT, DWG True-View and the AutoCAD Console (AccoreConsole).

Further new features:

- New label properties of ATHENA leaders
- Ergonomic changes in the ribbon
- New, modern dialog boxes
- Object projections (side elevations) now included in the label with length figure
- New: Change and transfer object label
- Easier editing of dimensions and levels
- New: Switch background infill of ATHENA label on and off
- Optimization of treatment of label scales
- „Load layer“ now also loads the material layer set in ATHENA
- Spacer now with bevels
- ATHENA options expanded
- Deactivation of ATHENA objects: Object covering is now retained
- Analyzed axis model can now be recalculated and copied
- Cutting: As boundary objects, infill planes now also permitted
- Bar joints and cuttings optimized
- Positions command: Runs up to 50% faster
- Diagram of infills now with tags (same-part recognition)
- Lists of bars, infills now with tags (same-part recognition)
- 2D pipes can now be automatically converted into 3D solids
- LogiKal (Orgadata) interface supplemented: Sections through LogiKal elements now associative, output options via LogiKal expanded

The system requirements for working with ATHENA 2014

- AutoCAD 2009 - 2015
- AutoCAD Architecture 2009 - 2015
- AutoCAD Mechanical 2009 - 2015

Operating system:

Windows Vista, Windows 7 und 8

Hardware:

ATHENA requires the same hardware configuration as AutoCAD.

AutoCAD – registered trade mark of Autodesk Inc.
Windows (XP, Vista, 7, 8) – registered trade marks of Microsoft Inc.

CAD-PLAN GmbH
Hanauer Landstrasse 174
60314 Frankfurt
Germany

Tel. +49-69-800 818-0
Fax +49-69-800 818-18

info@cad-plan.com
www.cad-plan.com

