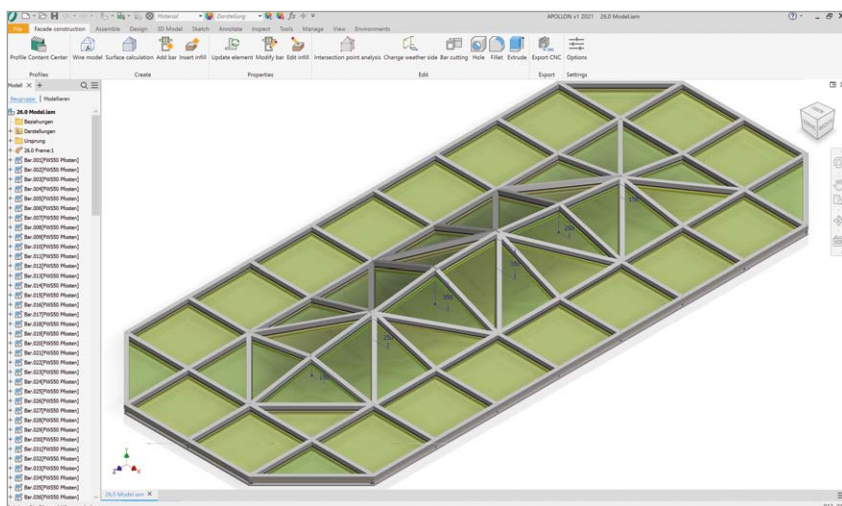
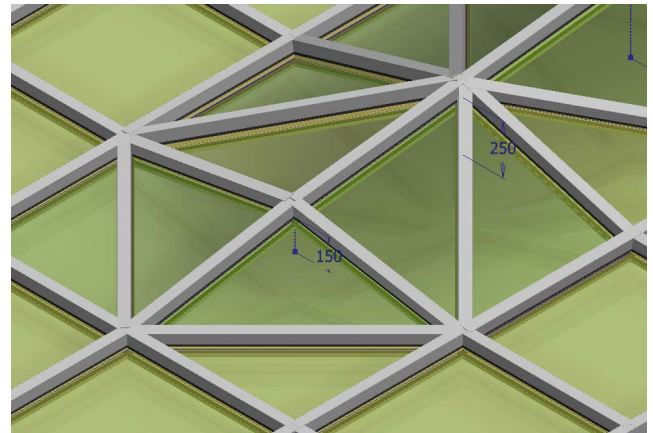




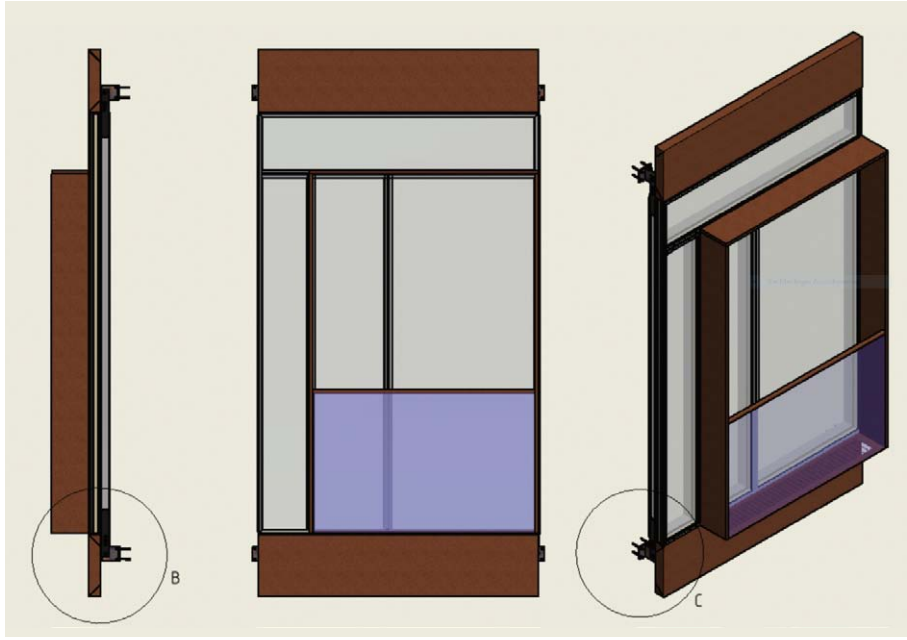
Full parametric 3D CAD/Modeling Software for Façade and Curtain Wall Design.

APOLLON is a full parametric 3D CAD / modeling software for Façade- and Curtain Wall design. Mullion-Transom-, Unitized- or Free-Form facades, all of them works. It covers the steps from building the model to production plans, part lists and CNC output for the machine. As a “standalone” product, APOLLON is the ideal complement to ATHENA and contains Autodesk Inventor®.



Advantages of APOLLON:

- Easy to use (ideal for Inventor® users)
- Interface to AutoCAD / ATHENA
- Interface to Revit, IFC
- Mullion and transom facades
- Unitized facades
- Sheet metal construction including developments
- Profile system independent



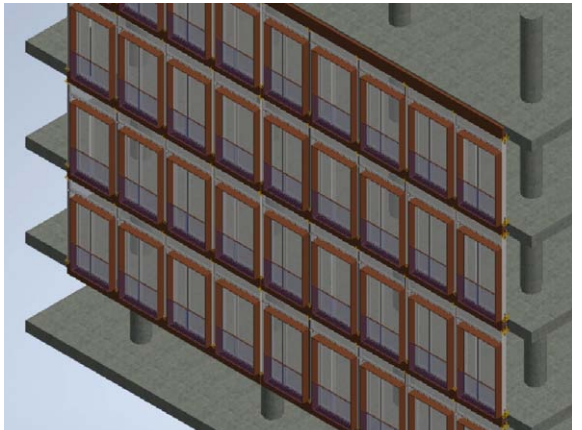
Facades or Curtain Walls can usually be designed very easily and efficiently with ATHENA (CAD software for Façade construction based on AutoCAD®). Details in 2D, Models in 3D. With ATHENA can this be done very easily and efficiently.

If the façade project is very complex and/or varied, however, full parametric software can be useful. This is where APOLLON comes into play. A parametric 3D modeling of a façade or unitized façade can be done perfect.

APOLLON is profile system-independent, but does not contain any profile master-data (except a small sample database). The profile master-data will be generated as project data during the design process. Advantage: Changes to the profile data, e.g. due to static requirements, are very easy to make. The master-data grows from time to time.

Interfaces to profile master-data from partners are added later.

Symbol	Werte	Bezeichnung	Bezeichnung	länge	Artikelnr.	Einheit	Auslastung	Materialnr.	SOZ. Volumen
1	1	1	1	1	1	1	1	1	1
2	1	1	1	1	1	1	1	1	1
3	1	1	1	1	1	1	1	1	1
4	1	1	1	1	1	1	1	1	1
5	1	1	1	1	1	1	1	1	1
6	1	1	1	1	1	1	1	1	1
7	1	1	1	1	1	1	1	1	1
8	1	1	1	1	1	1	1	1	1
9	1	1	1	1	1	1	1	1	1
10	1	1	1	1	1	1	1	1	1
11	1	1	1	1	1	1	1	1	1
12	1	1	1	1	1	1	1	1	1
13	1	1	1	1	1	1	1	1	1
14	1	1	1	1	1	1	1	1	1
15	1	1	1	1	1	1	1	1	1
16	1	1	1	1	1	1	1	1	1
17	1	1	1	1	1	1	1	1	1
18	1	1	1	1	1	1	1	1	1
19	1	1	1	1	1	1	1	1	1
20	1	1	1	1	1	1	1	1	1
21	1	1	1	1	1	1	1	1	1
22	1	1	1	1	1	1	1	1	1
23	1	1	1	1	1	1	1	1	1
24	1	1	1	1	1	1	1	1	1
25	1	1	1	1	1	1	1	1	1
26	1	1	1	1	1	1	1	1	1
27	1	1	1	1	1	1	1	1	1
28	1	1	1	1	1	1	1	1	1
29	1	1	1	1	1	1	1	1	1
30	1	1	1	1	1	1	1	1	1
31	1	1	1	1	1	1	1	1	1
32	1	1	1	1	1	1	1	1	1
33	1	1	1	1	1	1	1	1	1
34	1	1	1	1	1	1	1	1	1
35	1	1	1	1	1	1	1	1	1
36	1	1	1	1	1	1	1	1	1
37	1	1	1	1	1	1	1	1	1
38	1	1	1	1	1	1	1	1	1
39	1	1	1	1	1	1	1	1	1
40	1	1	1	1	1	1	1	1	1
41	1	1	1	1	1	1	1	1	1
42	1	1	1	1	1	1	1	1	1
43	1	1	1	1	1	1	1	1	1
44	1	1	1	1	1	1	1	1	1
45	1	1	1	1	1	1	1	1	1
46	1	1	1	1	1	1	1	1	1
47	1	1	1	1	1	1	1	1	1
48	1	1	1	1	1	1	1	1	1
49	1	1	1	1	1	1	1	1	1
50	1	1	1	1	1	1	1	1	1
51	1	1	1	1	1	1	1	1	1
52	1	1	1	1	1	1	1	1	1
53	1	1	1	1	1	1	1	1	1
54	1	1	1	1	1	1	1	1	1
55	1	1	1	1	1	1	1	1	1
56	1	1	1	1	1	1	1	1	1
57	1	1	1	1	1	1	1	1	1
58	1	1	1	1	1	1	1	1	1
59	1	1	1	1	1	1	1	1	1
60	1	1	1	1	1	1	1	1	1
61	1	1	1	1	1	1	1	1	1
62	1	1	1	1	1	1	1	1	1
63	1	1	1	1	1	1	1	1	1
64	1	1	1	1	1	1	1	1	1
65	1	1	1	1	1	1	1	1	1
66	1	1	1	1	1	1	1	1	1
67	1	1	1	1	1	1	1	1	1
68	1	1	1	1	1	1	1	1	1
69	1	1	1	1	1	1	1	1	1
70	1	1	1	1	1	1	1	1	1
71	1	1	1	1	1	1	1	1	1
72	1	1	1	1	1	1	1	1	1
73	1	1	1	1	1	1	1	1	1
74	1	1	1	1	1	1	1	1	1
75	1	1	1	1	1	1	1	1	1
76	1	1	1	1	1	1	1	1	1
77	1	1	1	1	1	1	1	1	1
78	1	1	1	1	1	1	1	1	1
79	1	1	1	1	1	1	1	1	1
80	1	1	1	1	1	1	1	1	1
81	1	1	1	1	1	1	1	1	1
82	1	1	1	1	1	1	1	1	1
83	1	1	1	1	1	1	1	1	1
84	1	1	1	1	1	1	1	1	1
85	1	1	1	1	1	1	1	1	1
86	1	1	1	1	1	1	1	1	1
87	1	1	1	1	1	1	1	1	1
88	1	1	1	1	1	1	1	1	1
89	1	1	1	1	1	1	1	1	1
90	1	1	1	1	1	1	1	1	1
91	1	1	1	1	1	1	1	1	1
92	1	1	1	1	1	1	1	1	1
93	1	1	1	1	1	1	1	1	1
94	1	1	1	1	1	1	1	1	1
95	1	1	1	1	1	1	1	1	1
96	1	1	1	1	1	1	1	1	1
97	1	1	1	1	1	1	1	1	1
98	1	1	1	1	1	1	1	1	1
99	1	1	1	1	1	1	1	1	1
100	1	1	1	1	1	1	1	1	1



CAD-PLAN GmbH
 Hanauer Landstrasse 174
 60314 Frankfurt
 Germany

Tel. +49-69-800 818-0
 Fax +49-69-800 818-18

info@cad-plan.com
 www.cad-plan.com

